

---

# André Derain and Diane Bolinger



"André Derain."  
*André Derain*.  
MOMA. Web. 19  
Nov. 2015. <<http://www.moma.org/collection/artists/1500>>.



"Diane Bolinger."  
*Diane Bolinger*.  
*Diane Bolinger*. Web. 19 Nov.  
2015. <<http://www.dianebolinger.com/#!/about/c240r>>.

---

Introduction: In this comparative study I will look at the the use of technical aspects of Andre Derain and Diane Bolinger works, both are fauvist painters. The artworks that will be analyzed in this comparative study include *Favism trees* and *Tribute to Derain* by Diane Bolinger, *Bridge over the Riou* and *The Turning Road L'Estaque* by Andre Derain.

---

# Background on Diane Bolinger

Diane Bolinger is an artist, and photographer who works in Weatherford, Texas. Diane Bolinger is a Fine Arts Department Head at Weatherford High School. She has had many exhibitions in New York and several locations and Museums in Texas. *Favism Trees* and *Tribute to Derain* are some of her earlier works.



*Favism  
Trees* by  
Diane  
Bolinger

"Favism Trees." *DianeBolinger.com*.  
Web Nov. 2015. <<http://www.dianeBolinger.com/#!FavismTrees/zoom/c199t/1fss>>.



*Tribute to Derain*  
by Diane  
Bolinger

"Tribute to Derain." *DianeBolinger.com*.  
Web. Nov. 2015. <[http://www.dianeBolinger.com/#!Tribute to Derain/zoom/c199t/image1f17](http://www.dianeBolinger.com/#!TributeToDerain/zoom/c199t/image1f17)>.



Self Portrait (photography) by Diane Bolinger

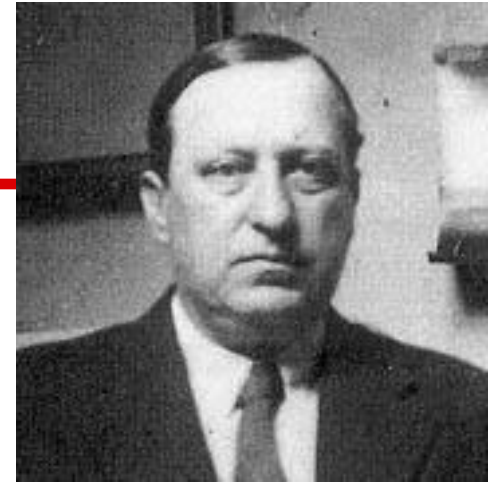
"Diane Bolinger." *DianeBolinger.com*.  
Diane Bolinger. Web. 19 Nov. 2015. <<http://www.dianeBolinger.com/#!about/c240r>>.

# Background on Derain

---

Andres Derain was a french painter during the early 20th century. He was part of the revolutionary avant-garde art movement. He would often work with other artist. Derain would work with different artist for several weeks and even years this influenced Derain's style of painting and the subjects of each piece. The influence of different artist are evident in his works from 1906 to 1954.

His subjects ranged from several landscapes of London and France to self portraits,nude figures and portraits of women, most of which were peasants.



"Andr  Derain." *Andr  Derain*. MOMA. Web. 19 Nov. 2015. <<http://www.moma.org/collection/artists/1500>>.

*The Turning Road L'Estaque* 1906  
by Andre Derain

"MoMA." *Andr  Derain. The Turning Road L'Estaque* 1906 MOMA. Web. 19 Nov. 2015. <<http://www.moma.org/collection/works/83381?locale=en>>.



# Bridge over the Riou 1906

Oil on canvas

---

*Bridge over the Riou* was created or started after the summer of 1905 when Andre Derain was no longer working in collaboration with Matisse. Instead Derain was working by himself but it is apparent that Matisse influenced some of his later works such *Bridge over the Riou* and other works from 1906 until 1954.

*Les toits de collioure* by  
Henri Matisse image



"Les Toits De Collioure - Henri Matisse." USEUM. USEUM Beta. Web. 19 Nov. 2015. <<http://useum.org/artwork/Les-toits-de-Collioure-Henri-Matisse-1905>>.

"MoMA." *André Derain. Bridge over the Riou. 1906.* MOMA. Web. 19 Nov. 2015. <<http://www.moma.org/collection/works/83381?locale=en>>.



*Bridge over the Riou* by Andre Derain 1906

The brush strokes between the two pieces are very similar in length and width. In both artworks the brush strokes can be seen. However Derain's brush strokes consist of more blending in many areas such as the trees and walls.

In this particular art piece it is evident how Matisse's artstyle is incorporated into Derain's *Bridge over the Riou*. In the composition of this tree there is an illusion of light, containing somewhat messy strokes or dabs of paint, this is one of the techniques used by Matisse in his artworks such as in *The Open Window*. Whereas Matisse uses light dabs of color in some areas and solid squares of color in other. There are also solid squares of color used this art piece.

---



Derain uses a variety of blending in *Bridge over the Riou*. As shown in the blending in the bridge and the shadows in the tunnel. There are no signs of thin or harsh brush strokes but there are thick dabs of color which are shown here. The viewers can see the blending occurring with the yellow and red which are becoming the orange of the bridge. The colors that stand out the most in this composition are the various shades of blue and other cool colors. The majority of this composition is cool colors that are blended together. Which then it slowly fades into individual brush strokes that can be seen .

"MoMA." Andr  Derain. *Bridge over the Riou*. 1906. MOMA. Web. 19 Nov. 2015.

<<http://www.moma.org/collection/works/83381?locale=en>>.



# Fauvism Trees

## Acrylic on Canvas

### By: Diane Bolinger

---

Image found at  
"Fauvism Trees." *DianeBolinger.com*. Web. 19 Nov. 2015. <<http://www.dianebolinger.com/#!/FauvismTrees/zoom/c199t/image1fss>>.

In this artwork we can see that Diane Bolinger uses bright and vivid colors in her artwork. The color scheme even though it uses various vibrant shades that past artists did not have access to is categorized under fauvism. There is a contrast between the warm and cool colors which gives the piece balance. The quadrants contains an equal ratio of warm and cool colors. The exception to ratio of warm and cool colors is the bottom left quadrant of Q3. This quadrant has many shades of cool colors. Such as the bottom of the trees or the roots are dark blue. This contrasts to the warm coloured surrounding hill demonstrates that tree is absorbing all of the dark colors and converting them into warm colors. The dark blues could represent the darkness of the earth or the oil spills that balcken the ocean in 2010 which was around the time that this painting was made.



# Color scheme between André Derain and Diane Bolinger



"MoMA." *André Derain. Bridge over the Riou. 1906.* MOMA. Web. 19 Nov. 2015. <<http://www.moma.org/collection/works/83381?locale=en>>.



"Fauvism Trees." *Diane Bolinger.com.* Web. 19 Nov. 2015. <<http://www.dianebolinger.com/#!FauvismTrees/zoom/c199t/image1fss>>.

The color scheme used by the two artists have similar components but differ in the way they are applied to each piece. In *Bridge Over Riou* we see that there is a contrast between warm and cool colors but the cool colors have more emphasis on them due to all the shadows that are present. Overall the composition has an evening light, meaning that the sun is about to set and as it is setting it creates shadows. The angle of the piece was also set so that the viewer could see both the shadows and the light being reflected on the scenery giving it more depth. There are visible brush strokes in the trees but the objects surrounding the tree are blended. This is completely different in *Fauvism Trees* there is a high contrast between warm and cool colors however there is more blending with these colors than in *Bridge Over Riou* since not many brush strokes are seen in the composition.

Bright red, sky or light blue, turquoise, and light green are colors that are pleasing to the eye but are not typically found in nature this is very different from *Bridge Over Riou*.

"Fauvism Trees." *Dianebolinger.com*. Web. 19 Nov. 2015. <<http://www.dianebolinger.com/#!FauvismTrees/zoom/c199t/image1fss>>.



The color scheme used in *Fauvism Trees* by Diane Bolinger has more emphasis on warm colors which is contrary to the color scheme used in *Bridge Over Riou*. The various shades of red have a greater emphasis on them due to the turquoise green

in the background. This color scheme is very vibrant but it gives no hint to what time this painting was supposed to be set in. The color scheme indicates a clear blue sky but does not indicate whether it was painted in the morning or in the afternoon. This is very different from Andre Derain's *Bridge over the Riou* which shows that it was set in the evening due to Derain's use of shadows and contours .



# The Turning Road L'Estaque 1906

## Oil on Canvas

---

This work has no specific date in which it was painted but it was painted in the same year as *Bridge over Riou*. *The Turning Road L'Estaque* is very similar in composition, color scheme and medium as *Bridge over Riou*. We see very little of Matisse's art technique in this composition but there is a slight change in color scheme and lighting. There are more shades and tones of warm colors especially in the compositions of the trees. The trees are where we can see each individual brush stroke, however in the smaller skinner trees there seems to be more blending in *The Turning Road L'Estaque* than in *Bridge over Riou*.

*Bridge over Riou*. By Andre Derain 1906



"MoMA." Andr   Derain. *Bridge over the Riou* 1906. MOMA. Web. 19 Nov. 2015. <<http://www.moma.org/collection/works/83381?locale=en>>.



*The Turning Road L'Estaque* by Andre Derain

"MoMA." Andr   Derain. *The Turning Road L'Estaque* 1906. MOMA. Web. 19 Nov. 2015. <<http://www.moma.org/collection/works/83381?locale=en>>.

---

# Tribute to Derain

---

"MoMA." *André Derain. The Turning Road L'Estaque 1906* MOMA. Web. 19 Nov. 2015. <<http://www.moma.org/collection/works/83381?locale=en>>.

*Tribute to Derain* is another artwork of Diane Bolinger's fauvist paintings which she attributed to Andre Derain and is similar in composition to many of Derain's works but with a more vibrant color scheme than most fauvist paintings. This art piece shows some signs of the time of day in which the painting was set, by the use of shadows and cool colors. The time period in which the painting was set in is about midday. But in Texas there are no clear signs of winter therefore the painting could have been painted at any time during the year. However *The Turning Road L'Estaque* by Andre Derain was painted in France where winter comes with heavy snow this indicates that the painting must have been made in late spring or early summer time.



*The Turning Road L'Estaque*  
by Andre Derain

*Tribute to Derain*  
by Diane Bolinger



"Tribute to Derain." *DianeBolinger.com*. Web. 19 Nov. 2015. <[http://www.dianeBolinger.com/#!Tribute to Derain/zoom/c199t/image1f17](http://www.dianeBolinger.com/#!Tribute%20to%20Derain/zoom/c199t/image1f17)>.



*The Turning Road L'Estaque* by Andre Derain  
1906



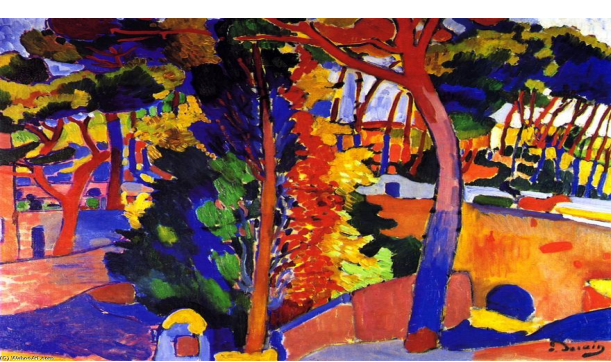
*Tribute to Derain* by Diane Bolinger  
2012

"MoMA." *André Derain. The Turning Road L'Estaque 1906*  
MOMA. Web. 19 Nov. 2015. <<http://www.moma.org/collection/works/83381?locale=en>>.

"Tribute to Derain." *Diane Bolinger.com*. Web. 19 Nov. 2015.  
<[http://www.dianeBolinger.com/#!Tribute to Derain/zoom/c199t/image1f17](http://www.dianeBolinger.com/#!Tribute%20to%20Derain/zoom/c199t/image1f17)>.

The color scheme for *The Turning Road L'Estaque* is very different from *Tribute to Derain* because of the vibrant colors that Diane Bolinger used. The color that stands out the most in the composition is the bright green used in the tree of *Tribute to Derain*. There is great contrast between the bright green and dark shades of blue and the various shades of red in *The Turning Road L'Estaque* which give the piece unity. Just as the contrasts between warm and cool colors formed shadows and outlines giving the piece unity as if everything that was painted belonged in that exact position. It is understandable that there is a change in the shades of colors used, since *The Turning Road L'Estaque* was painted in 1906 and *Tribute to Derain* was created recently in the 21st century rather than the 20th this might not seem as a great gap in centuries but *The Turning Road L'Estaque* was painted in 1906 and *Tribute to Derain* was painted in 2012.





"MoMA." Andr © Derain. *Bridge over the Riou*. 1906. MOMA. Web. 19 Nov. 2015. <<http://www.moma.org/collection/works/83381?locale=en>>.



"MoMA." Andr © Derain. *The Turning Road L'Estaque* 1906 MOMA. Web. 19 Nov. 2015. <<http://www.moma.org/collection/works/83381?locale=en>>.

*Bridge over Riou* and *The Turning Road L'Estaque* were both painted by Andre Derain in 1906 but they show differences in color scheme. In *The Turning Road L'Estaque* there is a more vibrant color scheme because the warm colors have more emphasis than the cool colors because the cool colors are repeated less than the warm colors. Contrary to *Bridge over Rio* which has more emphasis on the cool colors and shadows, this is obtained by the lack of repetition of warm colors. The warm colors show that there is light present however the darkness of the night is slowly creeping in on the scenery. Both paintings show that it is evening yet the color schemes are different due to the ratio of warm to cool colors. In both paintings there is an excellent use of light and shadows which gives the piece balance and unity. One of the notable differences between *The Turning Road L'Estaque* and *Bridge over Riou* is that in *The Turning Road L'Estaque* there are human figures and buildings in the composition. The depiction of human figures is very odd in one of Derain's landscapes since in many of his other works focus on a single subject. In the portraits that Derain painted the emphasis is on the subject or himself, and in his landscapes the emphasis was on the scenery, color scheme and the use of shadows. It is very odd that there are people in the painting yet the emphasis is not placed on rather their actions. This is shown by the way in which Derain painted the faces of the people, he uses the minimal amount of details in their faces, just eyes and an outline of the face.

# Materials and mediums used between each artwork

## Diane Bolinger Andre Derain

*The Turning Road L'Estaque* and *Bridge over Riou* by Andre Derain were painted using oil paints on canvas. While *Fauvism Trees* and *Tribute to Derain* by Diane Bolinger were painted using acrylic on canvas. The difference in mediums shows the level of skill of the artist. Acrylic and oil paints are very different because they both have positive and negative qualities. Acrylic paints are dry in a short amount of time while oils dry in long periods of time. Oils paints tend to blend better due to their long drying time but due to the acrylics relatively short amount of time to dry it makes it hard to blend.



"Fauvism Trees." *DianeBolinger.com*. Web. 19 Nov. 2015. <<http://www.dianeBolinger.com/#!FauvismTrees/zoom/c199t/image1fss>>.



"MoMA." *André Derain. Bridge over the Riou*. MOMA. Web. 19 Nov. 2015. <<http://www.moma.org/collection/works/83381?>>.



"MoMA." *André Derain. The Turning Road L'Estaque* 1906 MOMA. Web. 19 Nov. 2015. <<http://www.moma.org/collection/works/83381?locale=en>>.



"Tribute to Derain." *DianeBolinger.com*. Web. 19 Nov. 2015. <<http://www.dianeBolinger.com/#!Tribute to Derain/zoom/c>>

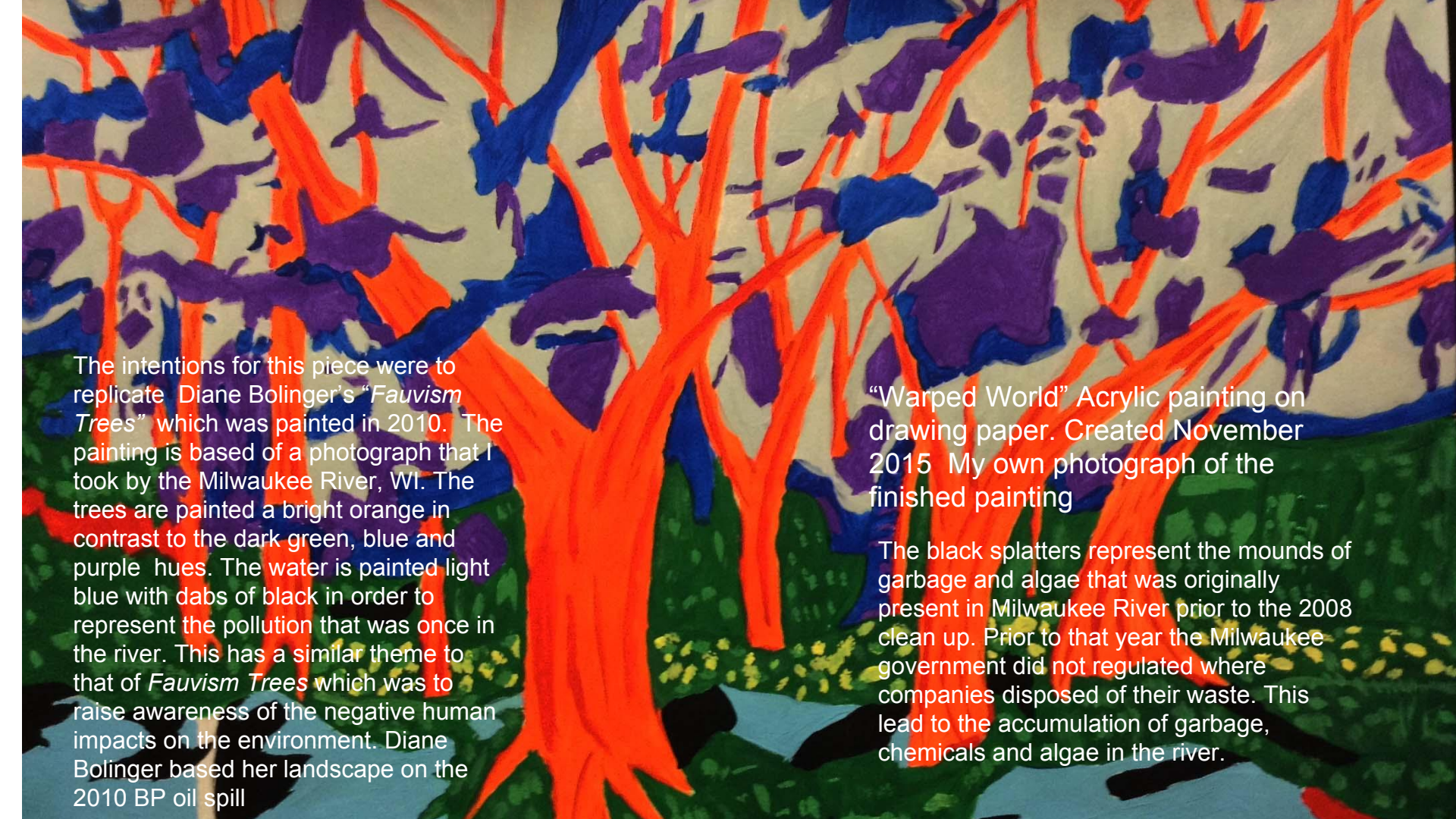
# Conclusion

---

In conclusion all the artworks that were analysed had unity and balance and rhythm. Diane Bolinger's artwork is similar to Andre Derain's in composition and rhythm. However Diane Bolinger's artworks are more two dimensional than Andre Derain's and use more vibrant colors. The mediums were also different because Andre Derain's paintings were both oil on canvas but Diane Bolinger's paintings were acrylic on canvas. We can attribute these differences to culture, location and year. Bolinger's paintings were all painted in the 21st century with an American influence. While Andre Derain painted in the 20th century and lived in France in the early 1900s. Andre Derain was influenced by other artists and his French culture. American culture in the 21st century is very open to the sharing of information since there is an easy access to the internet which connects thousands of people from across the globe each from a different culture. However in the early 1900s there was no access to the internet, it hadn't been invented so the process of sharing and communicating different ideas was a much longer process. This is demonstrated in Derain's artwork because it was only after he interacted and cooperated with Henri Matisse that he started to incorporate some of Matisse's art style into his own works. Demonstrating that in order to gain information a person would have to interact with another source.

---





The intentions for this piece were to replicate Diane Bolinger's "*Fauvism Trees*" which was painted in 2010. The painting is based on a photograph that I took by the Milwaukee River, WI. The trees are painted a bright orange in contrast to the dark green, blue and purple hues. The water is painted light blue with dabs of black in order to represent the pollution that was once in the river. This has a similar theme to that of *Fauvism Trees* which was to raise awareness of the negative human impacts on the environment. Diane Bolinger based her landscape on the 2010 BP oil spill

"Warped World" Acrylic painting on drawing paper. Created November 2015 My own photograph of the finished painting

The black splatters represent the mounds of garbage and algae that was originally present in Milwaukee River prior to the 2008 clean up. Prior to that year the Milwaukee government did not regulate where companies disposed of their waste. This led to the accumulation of garbage, chemicals and algae in the river.



## Use of Technique in Diane Bolinger and Myself



Fauvism Trees."  
*DianeBolinger.com*. Web. 19  
Nov. 2015. <[http://www.dianeBolinger.com/#!  
FauvismTrees/zoom/c199t/ima  
ge1fss](http://www.dianeBolinger.com/#!FauvismTrees/zoom/c199t/image1fss)>.



"Tribute to Derain." *DianeBolinger.com*. Web. 19  
Nov. 2015. <[http://www.dianeBolinger.com/#!  
Tribute to Derain/zoom/c199t/image1f17](http://www.dianeBolinger.com/#!Tribute%20to%20Derain/zoom/c199t/image1f17)>.

Diane Bolinger *Fauvism Trees* and *Tribute to Derain* were painted using acrylic on canvas. The special property of acrylic is that it dries very quickly unless kept wet by applying water to the canvas. This is a very common practice that is used to mix colors directly on the canvas. I used this technique to mix the light blue of the river. The light blue and light gray were applied first in order to obtain a smooth texture. Later after the paint was dry, darker colors were used to outline the landscape. Then after the dark colors were dry lighter colors are used to create the details of the trees, leaves and water. This process allows for the painting to be unified and creates a smooth texture..

My own image of the finished product.



## Use of technique between Andre Derain and myself

The technique used in Andre Derain's work is different from the techniques used in Warped World since *Bridge over the Riou* and many of his other pieces were painted using oil paints. Oil paints do not dry

---

as quickly as acrylic paints giving the artist a more vibrant color. That is the reason why there are many light pink shades used in *Bridge over the Riou*. In contrast to the dark reds found in the trees and the water. Acrylic paints dry darker than when first applied which made it difficult for the vibrant light pinks to show in the finished product instead they appear dark red.



"MoMA." Andr   Derain. *Bridge over the Riou* 1906.  
MOMA. Web. 19 Nov. 2015. <<http://www.moma.org/collection/works/83381?locale=en>>.



My own image of the finished product



## Style between Diane Bolinger and myself



Fauvism Trees."  
*DianeBolinger.com*.  
Web. 19 Nov. 2015.  
<<http://www.dianeBolinger.com/#!FauvismTrees/zoom/c199t/image1fss>>.



My own image of the finished product

The color scheme used by Diane Bolinger is, even though it uses various vibrant shades that past artists did not have access to, categorized under fauvism. The contrast between the warm and cool colors gives the piece balance. Both paintings show no to little sign to the time of day in which they were taken or what time of year. There is a two-dimensional aspect present in both paintings that makes it very simple yet the darker outline of the trees and landscape give the piece a unique three-dimensional appearance. The use of bright colors emphasizes the trees and ground. This contrasts between the dark gray and blue sky behind the trees.

## Style Between Andre Derain and myself

“Warped World” Pictures of the final product taken by me.

---



The style used in “Warped World” is similar to Andre Derain’s *Bridge over the Riou* since it implements the use of light and shadows. In *Bridge over the Riou* there is a clear use of the impressionist art style. Impressionism uses bright vivid colors to depict typically landscapes. Artists would draw landscapes several times at different times of the day. The lighting would change how the artists perceived the landscape. This style is apparent in “Warped World” since there the painting utilizes a similar color scheme which incorporates bright colors that contrast to the dark purples, black and blues. The style used in both paintings emphasize the trees by contrasting the colors of the trees and the rest of the landscape. The trees are also positioned at the center or eye level of the canvas which, along with the bright colors draws the viewer's attention to the trees and landscape.



"MoMA." Andr  Derain. *Bridge over the Riou* 1906. MOMA. Web. 19 Nov. 2015. <<http://www.moma.org/collection/works/83381?locale=en>>.

# Works Cited

---

- "André Derain." *André Derain*. MOMA. Web. 19 Nov. 2015. <<http://www.moma.org/collection/artists/1500>>.
  - "André Derain. L'Estaque (1906)." *MoMA.org*. N.p., n.d. Web.
    - <[http://www.moma.org/collection/browse\\_results.php?criteria=O%3AAD%3AE%3A1500&page\\_number=7&template\\_id=1&sort\\_order=1](http://www.moma.org/collection/browse_results.php?criteria=O%3AAD%3AE%3A1500&page_number=7&template_id=1&sort_order=1)>.
  - "MoMA." *André Derain. The Turning Road L'Estaque 1906* MOMA. Web. 19 Nov. 2015.
    - <<http://www.moma.org/collection/works/83381?locale=en>>.
  - "Diane Bolinger." *DianeBolinger.com*. Diane Bolinger. Web. 19 Nov. 2015.
    - <<http://www.dianeBolinger.com/#!/about/c240r>>.
  - "Fauvism Trees." *DianeBolinger.com*. Web. 19 Nov. 2015.
    - <<http://www.dianeBolinger.com/#!/FauvismTrees/zoom/c199t/image1fss>>.
  - "Tribute to Derain." *DianeBolinger.com*. Web. 19 Nov. 2015. <[http://www.dianeBolinger.com/#!/Tribute to Derain/zoom/c199t/image 1f17](http://www.dianeBolinger.com/#!/Tribute%20to%20Derain/zoom/c199t/image%201f17)>.
-